

# CITIZEN'S GUIDE TO DECK SAFETY

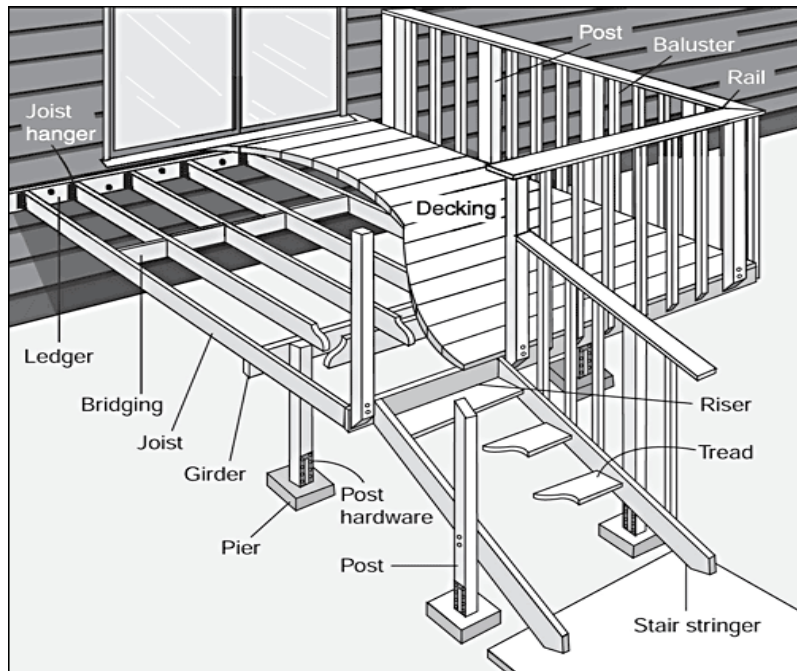


August 3, 2015

TOWN OF EMERALD ISLE & CARTERET COUNTY

## KNOW YOUR DECK COMPONENTS

First and foremost, every homeowner should familiarize themselves with the terminology used when referring to their deck components. Knowing the name of the component as well as what it looks like will go a long way when determining the safety of your deck. Common components are pier, post, ledger, joist, girder, bridging, decking, stair stringer, tread, riser, baluster and rail. Other hardware components include joist hanger, washer, nuts and nails. The picture to the right illustrates these common components mentioned.



## KNOW WHAT TO CHECK



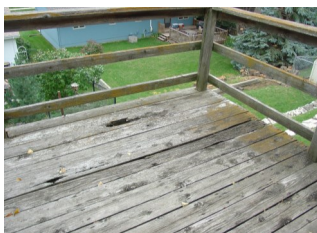
**Split or decaying wood:**  
Check several areas, pay attention to damp areas



**Flashing:** Check to make sure it is sound and firmly in place

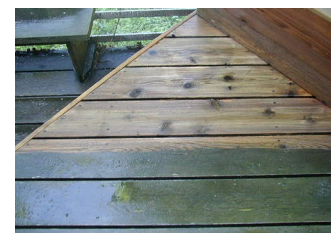


**Loose or corroded fasteners:**  
Tighten fasteners, replace rusted/corroded fasteners



**Railings/Handrails:** Make sure secure and solid

**Use this simple five step checklist to inspect your deck. These items will give you a clear indication as to the safety of your decking system. Address any issues you find.**



**Cleaning/Maintenance:**  
Remove debris and mildew, check deck coating

## TOWN OF EMERALD ISLE & CARTERET COUNTY

Town of Emerald Isle  
7500 Emerald Drive  
Emerald Isle, NC 28594

Phone: 252-354-8548  
E-mail: jedmondson@emeraldisle-nc.org  
Website: www.emeraldisle-nc.org

Carteret County Inspections  
402 Broad St  
Beaufort, NC 28516

Phone: 252-728-8545  
E-mail: Eugene.Foxworth@carteretcountync.gov  
Website: www.carteretcountync.gov

The Town Planner coordinates the Town's building inspections program with Carteret County and will put you in contact with them for code related concerns. If you are interested in a professional option regarding your deck, contact a local license contractor or home inspector who provides that service. The Town will be happy to provide you with a list of qualified professionals who serve our area. While many contractors work through the permitting process with the Town, it is important if you have questions about the process that you ask. Understanding the process will help with communication between contractor and client. As always, if the Town can answer any questions or concerns feel free to contact us and we will help in the best way we can.



## Coastal Construction : What Works Best?

Materials and construction methods should be resistant to flood and wind damage, corrosion, moisture and decay. All coastal buildings require maintenance and repair more so than inland construction. This is especially true for those components that are open/exposed to the elements. Preservative treated wood used in a coastal environment often

contains chemical preservatives. The connectors and fasteners used in conjunction with these pressure treated wood products should be properly selected and verified to be compatible with the treated wood. The moist salt air speeds up corrosion of these components as well. Fasteners should be hot-dip zinc-coated galvanized steel, stainless steel, silicon bronze

or copper. Ensure that all metal fasteners are the same type of metal. Avoid joining dissimilar metals especially those with high galvanic potential as they are more prone to corrosion. Always evaluate the nature of a material before determining if it is suitable for your application. For more information visit [www.fema.gov/media-library-data/](http://www.fema.gov/media-library-data/)

Silicon Bronze Wood Screw



Stainless Steel Joist Hanger



Stainless Steel Nails

